

# W / SERIES

52MM

## FEATURES

- IP67
- RED LED BACKLIGHT
- CLEAR LENS
- HIGH QUALITY STEPPER MOTOR MOVEMENT
- WORKING VOLTAGE: 12V / 24V



**GMFL52C**  
ELECTRICAL  
FUEL LEVEL GAUGE  
⚠ <13%



**GMWL52C**  
ELECTRICAL  
WATER LEVEL GAUGE  
⚠ <13%



**GMVO52C-16**  
ELECTRICAL  
VOLT GAUGE  
⚠ <11.5V



**GMVO52C-32**  
ELECTRICAL  
VOLT GAUGE  
⚠ <22V



**GMWT52C**  
ELECTRICAL  
WATER TEMP GAUGE  
⚠ >95°C



**GMHT52C**  
ELECTRICAL  
HOLDING TANK GAUGE  
⚠ >75%



**GMOP52C-5**  
ELECTRICAL  
OIL PRESSURE GAUGE  
⚠ <0.8BAR



**GMOP52C-10**  
ELECTRICAL  
OIL PRESSURE GAUGE  
⚠ <0.8BAR



**GMOT52C**  
ELECTRICAL  
OIL TEMP GAUGE  
⚠ >108°C



**GMRU52C**  
ELECTRICAL  
RUDDER GAUGE



**GMTR52C-L**  
ELECTRICAL  
TRIM GAUGE



**GMTR52C-R**  
ELECTRICAL  
TRIM GAUGE

## W / SERIES

### 52MM

## FEATURES

- IP67
- WHITE LED BACKLIGHT
- CLEAR LENS
- HIGH QUALITY STEPPER MOTOR MOVEMENT
- WORKING VOLTAGE: 12V / 24V



**GMFL52CB**  
ELECTRICAL  
FUEL LEVEL GAUGE  
! <13%



**GMWL52CB**  
ELECTRICAL  
WATER LEVEL GAUGE  
! <13%



**GMVO52CB-16**  
ELECTRICAL  
VOLT GAUGE  
! <11.5V



**GMVO52CB-32**  
ELECTRICAL  
VOLT GAUGE  
! <22V



**GMWT52CB**  
ELECTRICAL  
WATER TEMP GAUGE  
! >95°C



**GMHT52CB**  
ELECTRICAL  
HOLDING TANK GAUGE  
! >75%



**GMOP52CB-5**  
ELECTRICAL  
OIL PRESSURE GAUGE  
! <0.8BAR



**GMOP52CB-10**  
ELECTRICAL  
OIL PRESSURE GAUGE  
! <0.8BAR



**GMOT52CB**  
ELECTRICAL  
OIL TEMP GAUGE  
! >108°C



**GMRU52CB**  
ELECTRICAL  
RUDDER GAUGE



**GMTR52CB-L**  
ELECTRICAL  
TRIM GAUGE



**GMTR52CB-R**  
ELECTRICAL  
TRIM GAUGE

# W DG / SERIES

## 52MM

## FEATURES

- IP67
- RED LED BACKLIGHT
- CLEAR LENS
- WARNING FUNCTION
- WORKING VOLTAGE: 12V / 24V



**GMFL52DG**  
ELECTRICAL  
FUEL LEVEL GAUGE  
⚠ <13%



**GMWL52DG**  
ELECTRICAL  
WATER LEVEL GAUGE  
⚠ <13%



**GMVO52DG**  
ELECTRICAL  
VOLT GAUGE  
⚠ <11.5V ; <22V



**GMBT52DG**  
ELECTRICAL  
BATTERY GAUGE  
⚠ <20V



**GMWT52DG**  
ELECTRICAL  
WATER TEMP GAUGE  
⚠ >95°C



**GMHT52DG**  
ELECTRICAL  
HOLDING TANK GAUGE  
⚠ >75%



**GMOP52DG**  
ELECTRICAL  
OIL PRESSURE GAUGE  
⚠ <0.8BAR



**GMOT52DG**  
ELECTRICAL  
OIL TEMP GAUGE  
⚠ >108°C



**GMAP52DG**  
ELECTRICAL  
AIR PRESSURE GAUGE  
⚠ <0.8BAR



**GMHM52DG**  
ELECTRICAL  
HOUR METER



**GMAM52DG**  
ELECTRICAL  
AMMETER GAUGE



**GMTA52DG**  
ELECTRICAL  
TACH/HOUR GAUGE

# W DG / SERIES

52MM

## FEATURES

- IP67
- RED LED BACKLIGHT
- CLEAR LENS
- WARNING FUNCTION
- WORKING VOLTAGE: 12V / 24V



**GMFL52DGB**  
ELECTRICAL  
FUEL LEVEL GAUGE  
⚠ <13%



**GMWL52DGB**  
ELECTRICAL  
WATER LEVEL GAUGE  
⚠ <13%



**GMVO52DGB**  
ELECTRICAL  
VOLT GAUGE  
⚠ <11.5V ; <22V



**GMBT52DGB**  
ELECTRICAL  
BATTERY GAUGE  
⚠ <20V



**GMWT52DGB**  
ELECTRICAL  
WATER TEMP GAUGE  
⚠ >95°C



**GMHT52DGB**  
ELECTRICAL  
HOLDING TANK GAUGE  
⚠ >75%



**GMOP52DGB**  
ELECTRICAL  
OIL PRESSURE GAUGE  
⚠ <0.8BAR



**GMOT52DGB**  
ELECTRICAL  
OIL TEMP GAUGE  
⚠ >108°C



**GMAP52DGB**  
ELECTRICAL  
AIR PRESSURE GAUGE  
⚠ <0.8BAR



**GMHM52DGB**  
ELECTRICAL  
HOUR METER



**GMAM52DGB**  
ELECTRICAL  
AMMETER GAUGE



**GMTA52DGB**  
ELECTRICAL  
TACH/HOUR GAUGE

# W MULTI / SERIES

## 52MM

## FEATURES

- IP67
- RED LED BACKLIGHT
- CLEAR LENS
- WARNING FUNCTION
- 3 FUNCTION IN 1 GAUGE
- WORKING VOLTAGE: 12V / 24V



**GM3N1DG-1**

WATER LEVEL GAUGE

0~100% / 0~190Ω

**<13%**

HOLDING TANK GAUGE

0~100% / 0~190Ω

**>75%**

VOLT GAUGE

8~32V / 8~32V

**<11.5V ; <22V**



**GM3N1DG-2**

WATER TEMP

0~120°C / 1600~22Ω

**>95°C**

WATER LEVEL

0~100% / 0~190Ω

**<13%**

VOLT

8~32V / 8~32V

**<11.5V ; <22V**



**GM3N1DG-3**

WATER TEMP

0~120°C / 1600~22Ω

**>95°C**

OIL PRESSURE

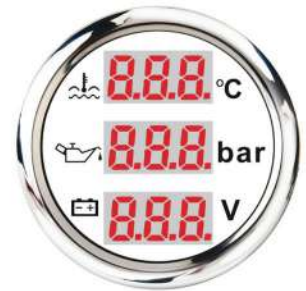
0~10BAR / 10~184Ω

**<0.8BAR**

FUEL LEVEL

0~100% / 0~190Ω

**<13%**



**GM3N1DG-4**

WATER TEMP

0~120°C / 1600~22Ω

**>95°C**

OIL PRESSURE

0~10BAR / 10~184Ω

**<0.8BAR**

VOLT

8~32V / 8~32V

**<11.5V ; <22V**



**GM3N1DG-5**

WATER TEMP

0~120°C / 1600~22Ω

**>95°C**

TACHOMETER

0~9999RPM

OIL PRESSURE

0~10BAR / 10~184Ω

**<0.8BAR**



**GMSP52DG-GPS**

SPEEDOMETER

0~600KM/H

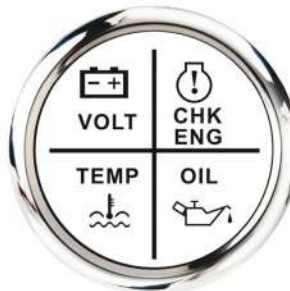
TRIPMETER

0~999.9KM

ODOMETER

0~99999KM

TFT-LCD DISPLAY



**GM524N1**

VOLT

CHECK ENGINE

WATER TEMP

OIL PRESSURE

4 FUNCTION IN 1

# W MULTI / SERIES

## 52MM

## FEATURES

- IP67
- RED LED BACKLIGHT
- CLEAR LENS
- WARNING FUNCTION
- 3 FUNCTION IN 1 GAUGE
- WORKING VOLTAGE: 12V / 24V



**GM3N1DGB-1**

WATER LEVEL GAUGE

0~100% / 0~190Ω

**<13%**

HOLDING TANK GAUGE

0~100% / 0~190Ω

**>75%**

VOLT GAUGE

8~32V / 8~32V

**<11.5V ; <22V**



**GM3N1DGB-2**

WATER TEMP

0~120°C / 1600~22Ω

**>95°C**

WATER LEVEL

0~100% / 0~190Ω

**<13%**

VOLT

8~32V / 8~32V

**<11.5V ; <22V**



**GM3N1DGB-3**

WATER TEMP

0~120°C / 1600~22Ω

**>95°C**

OIL PRESSURE

0~10BAR / 10~184Ω

**<0.8BAR**

FUEL LEVEL

0~100% / 0~190Ω

**<13%**



**GM3N1DGB-4**

WATER TEMP

0~120°C / 1600~22Ω

**>95°C**

OIL PRESSURE

0~10BAR / 10~184Ω

**<0.8BAR**

VOLT

8~32V / 8~32V

**<11.5V ; <22V**



**GM3N1DGB-5**

WATER TEMP

0~120°C / 1600~22Ω

**>95°C**

TACHOMETER

0~9999RPM

OIL PRESSURE

0~10BAR / 10~184Ω

**<0.8BAR**



**GMSP52DGB-GPS**

SPEEDOMETER

0~600KM/H

TRIPMETER

0~999,9KM

ODOMETER

0~999999KM

LCD DISPLAY



**GM524N1B**

VOLT

CHECK ENGINE

WATER TEMP

OIL PRESSURE

4 FUNCTION IN 1

# W / SERIES

## 85MM

### FEATURES

- IP67
- WHITE OR RED LED BACKLIGHT
- CLEAR LENS
- HIGH QUALITY STEPPER MOTOR MOVEMENT
- WORKING VOLTAGE: 12V / 24V



## SPEEDOMETER with ODOMETER

General

### KMH

#### 30KMH

GMSP30KM-85B

Black

GMSP30KM-85

White

#### 60KMH

GMSP60KM-85B

Black

GMSP60KM-85

White

### KMH

#### 30KMH

GMSP30KM-85B-GPS

Black

GMSP30KM-85-GPS

White

#### 60KMH

GMSP60KM-85B-GPS

Black

GMSP60KM-85-GPS

White

#### 120KMH

GMSP120KM-85B

Black

GMSP120KM-85

White

#### 200KMH

GMSP200KM-85B

Black

GMSP200KM-85

White

#### 120KMH

GMSP120KM-85B-GPS

Black

GMSP120KM-85-GPS

White

#### 200KMH

GMSP200KM-85B-GPS

Black

GMSP200KM-85-GPS

White

# W / SERIES

## 85MM

### FEATURES

- IP67
- WHITE OR RED LED BACKLIGHT
- CLEAR LENS
- HIGH QUALITY STEPPER MOTOR MOVEMENT
- WORKING VOLTAGE: 12V / 24V



## SPEEDOMETER with ODOMETER

With GPS Sensor



### MPH

#### 30MPH

GMSP30MP-85B

Black

GMSP30MP-85

White

#### 60MPH

GMSP60MP-85B

Black

GMSP60MP-85

White

### MPH

#### 30MPH

GMSP30MP-85B-GPS

Black

GMSP30MP-85-GPS

White

#### 60MPH

GMSP60MP-85B-GPS

Black

GMSP60MP-85-GPS

White

#### 120MPH

GMSP120MP-85B

Black

GMSP120MP-85

White

### KNOT

#### 60KNOT

GMSP60KN-85B

Black

GMSP60KN-85

White

#### 120MPH

GMSP120MP-85B-GPS

Black

GMSP120MP-85-GPS

White

### KNOT

#### 60KNOT

GMSP60KN-85B-GPS

Black

GMSP60KN-85-GPS

White



## W / SERIES

### 85MM

## FEATURES

- IP67
- WHITE OR RED LED BACKLIGHT
- CLEAR LENS
- HIGH QUALITY STEPPER MOTOR MOVEMENT
- WORKING VOLTAGE: 12V / 24V



## TACHOMETER with HOURMETER

### RPM

#### 3000RPM

GMTA3000-85B

Black

GMTA3000-85

White

#### 4000RPM

GMTA4000-85B

Black

GMTA4000-85

White

#### 6000RPM

GMTA6000-85B

Black

GMTA6000-85

White

#### 7000RPM

GMTA7000-85B

Black

GMTA7000-85

White

#### 8000RPM

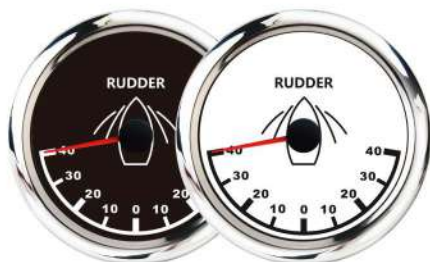
GMTA8000-85B

Black

GMTA8000-85

White

## RUDDER GAUGE



180°

GMRUB-180

Black

GMRU-180

White



270°

GMRUB-270

Black

GMRU-270

White

# NMEA2000

## 85MM



### NMEA2000 STANDRAD

**GM85DGW-NM**

WHITE FACE

**GM85DGB-NM**

BLACK FACE

## FEATURES

- IP67
- TFT-LCD DISPLAY
- CLEAR LENS
- WARNING FUNCTION
- NMEA2000 INTERFACTION
- 5 FUNCTION IN 1 GAUGE
- WORKING VOLTAGE: 12V / 24V

#### ENGINE SPEED

0~9999RPM

#### ENGINE OIL PRESSURE

0~10BAR

#### ENGINE TEMPERATURE

40~120°C

#### BATTERY VOLTAGE

9~32V

#### TOTAL ENGINE HOURS

0~99999.9H

#### SENSOR FAULT ALARM

#### OPERATING VOLTAGE

9~32VDC

#### POWER CONSUMPTION

<120mA

#### OPERATING TEMPERATURE

-20~70°C

#### STORAGE TEMPERATURE

-30~80°C

#### DEGREE of PROTECTION

IP 67



## NMEA2000 CONVERTER



AGNMEACON-1

NMEA 2000 Interface  
 6 Tank Type included:  
 Fuel, Freshwater, Wastewater  
 Live Well, Oil, Blackwater  
 1 Type Rudder (0~190 ohm)  
 Working Volt : 9~16 V(DC)  
 Working Temp : -30~70°C



AGNMEACON

NMEA 2000 Interface  
 8 Type included:  
 Speed Ratio, Engine Tilt/Trim  
 Oil Pressure, Water Temp, Rudder  
 Fuel Level, Freshwater Level,  
 Wastewater Level  
 Working Volt : 9~32 V(DC)  
 Working Temp : -30~75°C

# W / SERIES

## SENSOR



### PRESSURE SENSOR

**AG-UPPS-10184**

OPERATING VOLTAGE: 6V~24V  
 OPERATING TEMPERATURE: -25~120°C  
 MEASURING RANGE: 0~5 BAR or 0~10 BAR



### TEMPERATURE SENSOR

**AG-UPTS-40150**

OPERATING VOLTAGE: 6V~24V  
 OPERATING TEMPERATURE: -40~150°C  
 1/8 , 3/8 NPT , M14 , M16



### RUDDER ANGLE SENSOR

**AG-UPRS-0190**

OUTPUT SIGNAL: 0~190 PHM  
 OPERATING TEMPERATURE: -30~75°C



### TACHO SENSOR

**AG-UPAS-1200**

OUTPUT SIGNAL: SQUARE WAVE  
 OPERATING TEMPERATURE: -40~85°C

# VDY / SERIES

52MM

## FEATURES

- IP65
- BULB BACKLIGHT
- CLEAR LENS
- AIR CORE MOVEMENT
- WORKING VOLTAGE: 12V



**YAMW-12V**  
ELECTRICAL  
AMP GAUGE



**YOPW-12V**  
ELECTRICAL  
OIL PRESSURE GAUGE  
240~33Ω / 10~180Ω



**YWTW-12V**  
ELECTRICAL  
WATER TEMP GAUGE



**YOTW-12V**  
ELECTRICAL  
OIL TEMP GAUGE



**YVOW-12V**  
ELECTRICAL  
VOLT GAUGE



**YFLW-12V**  
ELECTRICAL  
FUEL LEVEL GAUGE  
240~33Ω / 10~180Ω



**YWLW-12V**  
ELECTRICAL  
WATER LEVEL GAUGE  
240~33Ω



**YTKW-12V**  
ELECTRICAL  
TANK LEVEL GAUGE  
10~180Ω



**YGHW-52C**  
ELECTRICAL  
HOUR METER



**85TABW-55**  
MECHANICAL  
SPEEDOMETER  
85MM



**85TABW-4000**  
ELECTRICAL  
TACHOMETER  
85MM



**85TABW-6000**  
ELECTRICAL  
TACHOMETER  
85MM

# VDY / SERIES

## 52MM

### FEATURES

- IP65
- BULB BACKLIGHT
- CLEAR LENS
- AIR CORE MOVEMENT
- WORKING VOLTAGE: 12V



**YAM-12V**  
ELECTRICAL  
AMP GAUGE



**YOP-12V**  
ELECTRICAL  
OIL PRESSURE GAUGE  
240~33Ω / 10~180Ω



**YWT-12V**  
ELECTRICAL  
WATER TEMP GAUGE



**YOT-12V**  
ELECTRICAL  
OIL TEMP GAUGE



**YVO-12V**  
ELECTRICAL  
VOLT GAUGE



**YFL-12V**  
ELECTRICAL  
FUEL LEVEL GAUGE  
240~33Ω / 10~180Ω



**YWL-12V**  
ELECTRICAL  
WATER LEVEL GAUGE  
240~33Ω



**YTK-12V**  
ELECTRICAL  
TANK LEVEL GAUGE  
10~180Ω



**YGH-52C**  
ELECTRICAL  
HOUR METER



**85TAB-55**  
MECHANICAL  
SPEEDOMETER  
85MM



**85TAB-4000**  
ELECTRICAL  
TACHOMETER  
85MM



**85TAB-6000**  
ELECTRICAL  
TACHOMETER  
85MM

# Y90 / SERIES

52MM

**BACKLIGHT**

● WHITE ● AMBER

## FEATURES

- IP67
- WHITE & AMBER LED BACKLIGHT
- CLEAR LENS
- AIR CORE MOVEMENT



**AGYAOP-10180**  
ELECTRICAL  
OIL PRESSURE GAUGE  
10~180Ω



**AGYAOP-24033**  
ELECTRICAL  
OIL PRESSURE GAUGE  
240~33Ω



**AGYAWT**  
ELECTRICAL  
WATER TEMP GAUGE  
300~22Ω



**AGYAFL-10180**  
ELECTRICAL  
FUEL LEVEL GAUGE  
10~180Ω



**AGYAFL-24033**  
ELECTRICAL  
FUEL LEVEL GAUGE  
240~33Ω



**AGYAOT**  
ELECTRICAL  
OIL TEMP GAUGE  
204~11Ω



**AGYAVO**  
ELECTRICAL  
VOLT GAUGE



**AMBER DISPLAY**  
| DOUBLE VISION |

# Y27 / SERIES

52MM

**BACKLIGHT**

● WHITE ● AMBER

## FEATURES

- IP67
- WHITE & AMBER LED BACKLIGHT
- CLEAR LENS
- STEPPER MOTOR MOVEMENT



**AGYBO270**  
ELECTRICAL  
BOOST GAUGE  
-1~2BAR



**AGYOP270-24033**  
ELECTRICAL  
OIL PRESSURE GAUGE  
240~33Ω



**AGYOP270-10180**  
ELECTRICAL  
OIL PRESSURE GAUGE  
10~180Ω



**AGYWT270**  
ELECTRICAL  
WATER TEMP GAUGE  
300~22Ω



**AGYOT270**  
ELECTRICAL  
OIL TEMP GAUGE  
204~11Ω



**AGYVO270**  
ELECTRICAL  
VOLT GAUGE



**AGYFL270-24033**  
ELECTRICAL  
FUEL LEVEL GAUGE  
240~33Ω



**AGYFL270-10180**  
ELECTRICAL  
FUEL LEVEL GAUGE  
10~180Ω



**AGYCK270**  
ELECTRICAL  
CLOCK GAUGE  
ONLY WHITE LED BACKLIGHT



**AMBER DISPLAY**  
| DOUBLE VISION |

# FLOAT



FUEL TANK FLOAT

## NO.94

For 5"~27" Depth Tank

- 240 - 33 OHM
- 0 - 190 OHM



FUEL / WATER LEVEL FLOAT  
304 Stainless



5 Holes



1 1/4 BSP

**0 - 190 OHM**  
NO.01905

- 12mm - 35mm
- 15mm - 38mm
- 17mm - 45mm
- 20mm - 50mm
- 25mm - 55mm
- 29mm - 60mm

**240 - 33 OHM**  
NO.240335

- 12mm - 29mm
- 15mm - 35mm
- 17mm - 38mm
- 20mm - 45mm
- 25mm - 50mm

**0 - 190 OHM**  
NO.0190

- 12mm - 35mm
- 15mm - 38mm
- 17mm - 45mm
- 20mm - 50mm
- 25mm - 55mm
- 29mm - 60mm

**240 - 33 OHM**  
NO.24033

- 12mm - 29mm
- 15mm - 35mm
- 17mm - 38mm
- 20mm - 45mm
- 25mm - 50mm



HOLDING TANK FLOAT  
316 Stainless



5 Holes



1 1/4 BSP

**0 - 190 OHM**  
NO.01905W

- 12mm - 35mm
- 15mm - 38mm
- 17mm - 45mm
- 20mm - 50mm
- 25mm - 55mm
- 29mm - 60mm

**240 - 33 OHM**  
NO.240335W

- 12mm - 29mm
- 15mm - 35mm
- 17mm - 38mm
- 20mm - 45mm
- 25mm - 50mm

**0 - 190 OHM**  
NO.0190W

- 12mm - 35mm
- 15mm - 38mm
- 17mm - 45mm
- 20mm - 50mm
- 25mm - 55mm
- 29mm - 60mm

**240 - 33 OHM**  
NO.24033W

- 12mm - 29mm
- 15mm - 35mm
- 17mm - 38mm
- 20mm - 45mm
- 25mm - 50mm



# FLOAT



MECHANICAL  
FUEL / TANK LEVEL GAUGE



## WHITE

AG-MFL

- 150mm - 260mm
- 160mm - 300mm
- 180mm - 330mm
- 200mm - 400mm
- 220mm - 500mm
- 250mm - 600mm



## BLUE

AG-MFL

- 150mm - 260mm
- 160mm - 300mm
- 180mm - 330mm
- 200mm - 400mm
- 220mm - 500mm
- 250mm - 600mm

# OTHER PARTS



AG-MFL-6H

6-HOLE FLANGE  
ALUMINUM



AG-MFL-W

WELDING FLANGE  
STAINLESS STEEL



AG-MFL-W-B

WELDING FLANGE  
PLASTIC BLACK